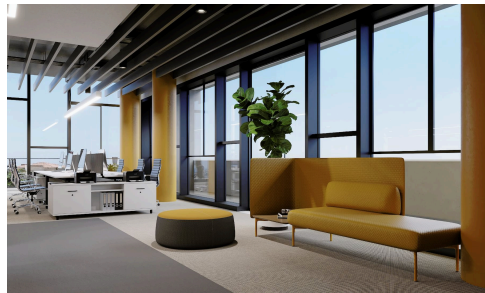


#8983



## Office in Mesa Geitonia, Limassol

€3,161,150 +VAT

 Mesa Geitonia, Limassol

Nestled at the entrance of Limassol's bustling city center, the property offers residents and professionals alike a harmonious blend of accessibility and serenity.

This Project encompasses both residential and commercial buildings. The residential zone comprises 16 apartments ranging from 73.00 m<sup>2</sup> to 140.20 m<sup>2</sup>, while the commercial sector features a fourth-floor building housing 5 modern offices, each occupying its own floor with sleek, contemporary layouts.

With its prime location in Mesa Geitona, comprehensive infrastructure, and on-site office center, it promises excellent

Covered

 301 m<sup>2</sup>

