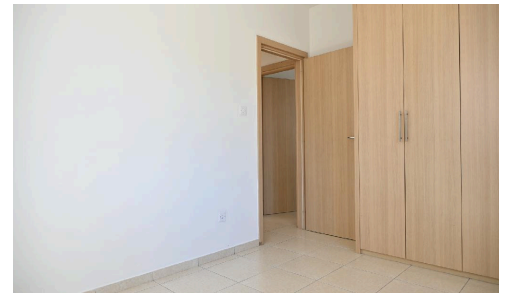
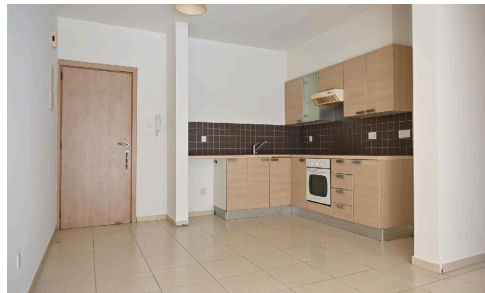
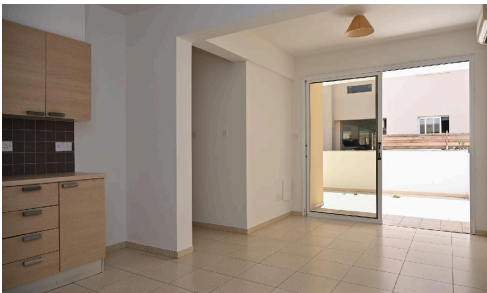


#13179



## Apartment in Pyla, Larnaca

€130,000

 Pyla, Larnaca

A flat with two bedrooms in an attractive location in Pyla Community in Larnaca District, at a distance of 140 meters (approx.) west of "UCLAN" University and 890 meters (approx.) west of Larnaca - Agia Napa motorway.

The development is ideally situated close to all necessary amenities and services. In addition, has excellent access to the motorway. The immediate area of the property designates an increased demand for apartments due to the existence of UCLAN university and the proximity to Oroklini tourist area.

The flat which was constructed in 2008 and is located on the ground floor of the building, and it comprises of kitchen/

Bedrooms

 2

Bathrooms

 1

Covered

 65 m<sup>2</sup>

