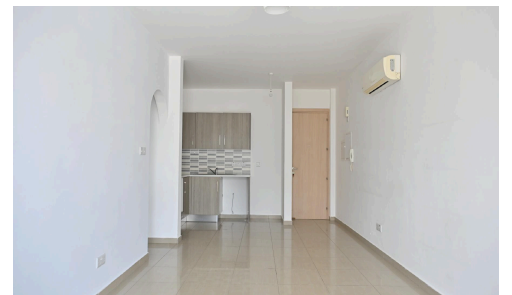
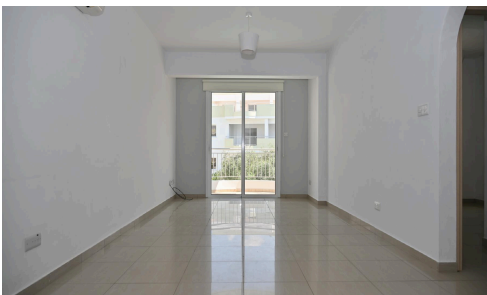


#13131



Apartment in Pyla, Larnaca

€100,000

 Pyla, Larnaca

One bedroom apartment in Pyla Community in Larnaca District. It is situated at a distance of 240 meters (approx.) northwest of the motorway and 1.7 km south of UCLAN university. The property is ideally situated close to a plethora of amenities and services such as supermarkets, restaurants, shops, cafes etc. In addition, it enjoys excellent access to the tourist area of Pyla and the motorway.

The apartment was constructed in 2012 and it is located on the first floor and consists of kitchen/living room/dining room as an open space, one bedroom, bathroom with toilet and a covered veranda. In addition, it has the right to use a covered parking space on the ground floor.

Bedrooms



1

Bathrooms



1

Covered

 55 m²

