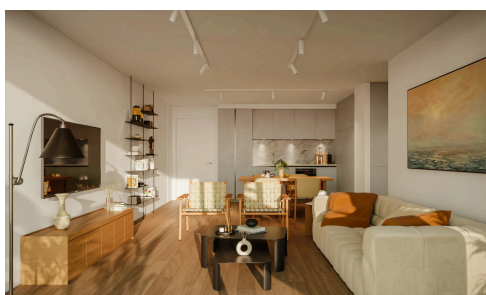


#13001



## Apartment in Petros and Pavlos, Limassol

€459,000 +VAT

 Petros kai Pavlos, Limassol

A 9-apartment building in Kapsalos, one block north of Makariou Avenue in the heart of Limassol. Ale Park sits directly beside the building; ERA Apollon shopping centre, medical clinics, cafés, and schools are all within walking distance. Limassol's historical centre - where most of the city's offices and evening amenities are concentrated - is three minutes by car, the seafront five. The building is on a quiet residential street with full city-centre access on either side.

Offers [1+1 / 2-bed] apartments across three floors, ranging from 60m<sup>2</sup> to 78m<sup>2</sup>, each with a covered veranda. Third-floor units include private roof gardens of up to 42m<sup>2</sup> - private outdoor space that is genuinely uncommon at this

Bedrooms

 2

Bathrooms

 2

Covered

 78 m<sup>2</sup>

Energy efficiency rating

 A

